

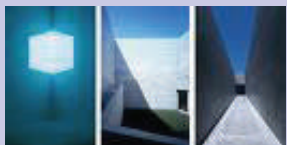
**Artlovers' Amble - Japan
2009**
small escorted tours

These tours have been specially designed for Australian artlovers wishing to experience and appreciate both enigmatic "traditional" Japanese art and cutting edge creativity of Japan's modern buildings and art, often admired from afar by architects and artists alike.

Indulge yourself with an amble through ancient Kyoto and modern Tokyo, at your own pace, in your own time - free to explore and to savour the experience.

For departure : 13th July 2009

Enjoy the experience of a lifetime as the country bares its soul and turns out to celebrate and revel in the world-renowned 1,000 years old Kyoto Gion Festival season. A unique tour at a great time of year.



Kyoto Gion Festival
with tour departing
13th July'09



JANESCO Travel Australia

Suite 301, 3rd Floor , Lawson House
10-12 Clarke Street,
Crows Nest NSW 2065 Australia

Phone: 02-9438-3856

Fax : 02-9438-2256

email: contact@janesco.com.au

www.janesco.com.au

Travel Agent L/N : 2TA5834

10 MAY
13 JUL
27 SEP
2009

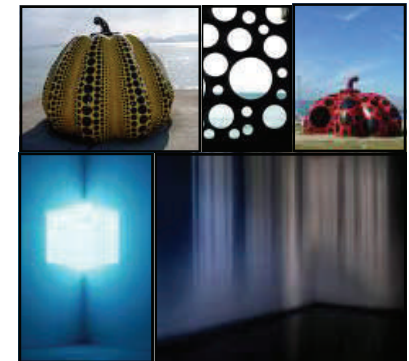
**9 Day Artlovers'
Amble-Japan 2009**

Naoshima **B**enesse art site
Miho museum, **U**kiyoe
Traditional & **M**odern **A**rts,

Famous historical sites of
Kyoto & **T**okyo

Kyoto **G**ion **F**estival

Ideal for
art lovers & architects



JANESCO Travel

9 day Artlover' Amble - Japan 2009

Day 1 AUSTRALIA-TOKYO

L & Light meal (both by in-flight service)

Day flight to Narita airport and transfer to hotel

Day 2 TOKYO - OKAYAMA B D

Morning sightseeing tour of Tokyo by chartered coach. Visit Asakusa temple and stroll down the colourful Nakamise shopping street. Return to Hotel. Afternoon travel to Okayama by Shinkansen (Bullet train). Welcome Dinner.

Day 3 NAOSHIMA ISLAND ARTSITE B D

Full day sightseeing tour to Naoshima Island. Enjoy Chichu museum, Benesse art site and House Projects of the village by chartered transportation. Late afternoon, travel to Kyoto. Dinner at hotel.

Day 4 KYOTO B D

Morning, visit Nijo Castle, Imperial palace garden, Golden Pavilion (Kinkakuji Temple) Afternoon, visit Kiyomizu Temple overlooking the city. Part of the charm of visiting Kiyomizu temple is the approach to the temple along the steep and busy lanes of Kyoto's old atmospheric Higashiyama district. In the evening, visit Gion Geisha district for an evening walk. Dinner at local restaurant.

■ *only for passengers dep. 13 Jul'09:* Enjoy Yoiyama, the night before the Gion Festival Gion Yamaboko Junkou parade of floats, The festival music and Yoiyama display of floats lit up at night attract huge crowds in central Kyoto. (You can also enter some floats.)

Day 5 KYOTO B D

■ *for groups dep. 10 May & dep. 28 Sep'09:-* Visit Miho Museum. Afternoon at leisure.

■ *for group dep. 13 Jul'09:-* Enjoy the spectacular 1000 year old Kyoto Gion festival, Gion Parade in the morning. and enjoy visiting Miho Museum in the Afternoon, Dinner at Hotel.

Day 6 KYOTO—TOKYO B D

Morning at leisure. Suggestion: Visit Fushimi Inari Afternoon, travel to Tokyo. Check in at hotel. Dinner

Day 7 TOKYO B D

Day at leisure.
Suggestions: Take optional tour to Mt. Fuji or Nikko Toshogu Shrine. or visit more art museums. Roppongi Art Triangle. The National Art Centre, Suntory Museum of Art, the Mori Art Museum. Edo Museum and learn more about the History and Culture of Tokyo. Farewell Dinner.

Day 8 TOKYO-AUSTRALIA B D (in-flight service)

Enjoy your last day in Japan with some last minute souvenir hunting or some optional half day activity. Perhaps follow your escort to Meiji shrine and Omotesando promenade Harajuku. Late afternoon leave hotel for Narita by chartered motorcoach. Depart for Australia.

Day 9 Australia B (in-flight service)

Morning Arrival. Interstate passengers connecting flight.

tour prices

ex. **Brisbane, Sydney**

\$ 4,770 Twin share/person

ex. **Canberra, Melbourne, Adelaide**

\$ 4,970 Twin share/person

ex. **Perth**

\$ 5,280 Twin share/person

Single Supplement

\$ 550

Land only/ Twin share/ person, Joining from Day1

■ **Suited for passengers who are starting from Tokyo**

\$ 3,770

Land only/ Twin share/ person, Joining from Day2

■ **Suited for passengers starting from Kansai airport**

\$ 3,510

tour inclusions

- Fully Escorted Tour
- Return airfares to from Narita/Tokyo By Japan Air lines.
- All transfers and admissions specified
- 7 Day Japan Rail Pass
- Deluxe accommodation with private facility
- Total 13 Meals :
Breakfast daily(7), Dinners daily (6),
- Baggage portorage - one piece 20Kg
- Half day tour of Tokyo with English speaking guides, including Asakusa temple, Nakamise, Ginza and Akihabara.
- Full day Kyoto sightseeing tour to Golden Pavilion, Nijjo Castle, Imperial Palace and Kiyomizu temple district
- Full day visit Naoshima Island Art Site; Benesse art site of Naoshima. Benesse Museum, Chichu Museum, House Art Projects

Bonus for 13th July Departure Group

- Enjoy Kyoto Gion Festival on Day4 (16 July,2009) & Day5(17 July 2009).

JANESCO Travel Australia

Suite 301, 3rd Floor , Lawson House
10-12 Clarke Street,
Crows Nest NSW 2065 Australia

Phone: 02-9438-3856

Fax : 02-9438-2256

email: contact@janesco.com.au
www.janesco.com.au